

DIAPHRAGM METER PARTS CATALOG

Product Lines: METRIS, 400A, 675A, 800A, 1000A



This is a comprehensive catalog of diaphragm meter parts for Itron, Inc. It contains parts used in current production. For information on part numbers, descriptions or assemblies in previous models of Sprague, Schlumberger or Actaris meters, please call customer service at 800-490-0657.

Price list effective March 10th, 2009. All information and descriptions of parts in this document are believed to be accurate, but are not guaranteed. All prices are in USD and are subject to change without notice. All taxes extra. FOB Owenton, KY. Minimum order \$100.

Index of Diaphragm Meter Parts

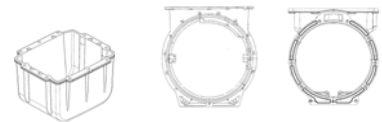
<p>B</p> <p>Badges.....5</p> <p>Brackets –</p> <p style="padding-left: 20px;">Center Bracket Assembly.....6</p> <p style="padding-left: 20px;">Diaphragm Bracket.....7</p>	<p>E</p> <p>Extension Plate.....6</p> <p>F</p> <p>Flag Arm Link.....9</p> <p>G</p> <p>Gaskets –</p> <p style="padding-left: 20px;">Case.....3</p> <p style="padding-left: 20px;">Diaphragm.....3</p> <p style="padding-left: 20px;">Top.....3</p> <p>Gear Shaft-Helical Worm.....9</p> <p>H</p> <p>Handhole Cover.....4</p> <p>I</p> <p>IDM Assembly.....4</p> <p>Indexes.....4</p> <p>Index Boxes.....4</p> <p>Index Mounting Bracket.....3</p> <p>M</p> <p>Main Shaft Assembly.....7</p>	<p>O</p> <p>O-Ring Handhole Cover.....3</p> <p>Outlet Seal.....9</p> <p>R</p> <p>Retaining Clip.....9</p> <p>S</p> <p>Screw List.....8</p> <p>Seal Cup.....7</p> <p>Security Seal Caps.....7</p> <p>T</p> <p>Tangent Adjustment Assemblies.....6</p> <p>Tangent Crank.....7</p> <p>Top Assemblies.....3</p> <p>V</p> <p>Valve Covers.....5</p> <p>Valve Cover Guides.....9</p> <p>Valve Seats.....6</p>
<p>C</p> <p>Castings</p> <p style="padding-left: 20px;">Center.....3</p> <p style="padding-left: 20px;">Side Cover.....3</p> <p style="padding-left: 20px;">Top.....3</p> <p style="padding-left: 20px;">Top Assemblies.3</p> <p>Carrier Wire Assembly.....7</p> <p>Ceiling Plate.....6</p> <p>Center Modules.....9</p> <p>Connection Nut.....7</p> <p>Connection Washer.....7</p> <p>D</p> <p>Diaphragm Assembly...6</p> <p>Drive Dogs.....5</p>		

Meter Top Assembly (Top Casting, IDM, Hubs)



Meter	Part Description	C to C	Part Number
METRIS	#1 Sprague Standard	6"	091371-001
METRIS	30LT	6"	091372-001
METRIS	20LT	6"	091373-001
METRIS	10LT	6"	091374-001
METRIS	1-1/4 (1" Pittsburgh)	6"	091375-001
METRIS	SF RM Top with IDM	--	091343
400A	#4 Sprague Standard (ft³)	6-25/32"	109390
400A	#4 Sprague Standard (ft³)	8-1/4"	109394
400A	20LT (ft³)	6-25/32"	109391
400A	20LT (ft³)	8-1/4"	109395
400A	30LT (ft³)	6-25/32"	109392
400A	30LT (ft³)	8-1/4"	109396
400A	45LT (ft³)	6-25/32"	109393
400A	45LT (ft³)	8-1/4"	109397
675A	#4 Sprague Standard (ft³)	10"	109620
675A	30LT (ft³)	10"	109621
675A	45LT (ft³)	10"	109622
800A & 1000A	#5 Sprague Standard (ft³)	11"	109600
800A & 1000A	30LT (ft³)	11"	109605
800A & 1000A	45LT (ft³)	11"	109601
800A & 1000A	60LT (ft³)	11"	109602
800A & 1000A	100LT (ft³)	11"	109603
800A & 1000A	ET Top #5 Sprague Standard (ft³)	11"	109641
800A	ET Top 30LT (ft³)	11"	109649
800A & 1000A	ET Top 45LT (ft³)	11"	109643
800A & 1000A	ET Top 100LT (ft³)	11"	109651

Meter Castings



Meter	Part Description	Part Number
METRIS	Lower Case-METRIS	091334
400A	Center Casting	109387
400A	Side Cover	80002102
675A, 800A & 1000A	Center Casting	55058102
675A, 800A & 1000A	Side Cover	550565

Gaskets and O-Rings



Meter	Part Description	Part Number
METRIS	Case Gasket	091325
METRIS, 400A, 675A, 800A & 1000A	Handhole O-Ring	091007
400A	Side Cover Gasket	065270
675A, 800A & 1000A	Diaphragm O-Ring	550551
400A	Top Gasket	035511
675A, 800A & 1000A	Top Gasket	550511

Index Mounting Bracket Assembly

Meter	Part Description	Part Number
675A, 800A & 1000A	Index mounting bracket	55045404
675A, 800A & 1000A	Index Screws for Indexes #050556 and #050557	010040
675A, 800A & 1000A	Index Screws for Indexes #80002701 - #80002704	090071

Parts Catalog

IDM Assembly



Meter	Part Description	Part Number
METRIS, 400A	IDM Assembly	091460
675A,800A & 1000A	IDM for Standard Top (ft³)	555986
675A,800A & 1000A	IDM for ET Top (ft³)	555996
675A,800A & 1000A	IDM for Standard Top (m³)	555987
675A,800A & 1000A	IDM Screws	015332
675A,800A & 1000A	Male Drive Dog	550555
675A,800A & 1000A	Seal Unit	010935

Index Boxes



Meter	Part Description	Part Number
METRIS & 400A	Index Box with Boss and RTV	016610
METRIS & 400A	Index Box with Ports and RTV	015619
675A,800A & 1000A	Index Box with RTV (Not Pictured)	80006001

Handhole Cover



Meter	Part Description	Part Number
METRIS, 400A, 675A, 800A & 1000A	Handhole Cover	091006

Indexes



Meter	Part Description	Type	Part Number
METRIS & 400A	2 PSI Compensating, 4 Circle, ft³	NTC & TC	017289
METRIS & 400A	5 PSI Compensating, 4 Circle Dial, ft³	NTC & TC	017228
METRIS & 400A	4 Circle Dial 1/2'2' (ft³)	NTC	017312
METRIS & 400A	4 Circle Dial 1/2'2' (ft³)	TC	017316
METRIS & 400A	4 Digit Direct Read (ft³)	NTC	017322
METRIS & 400A	4 Digit Direct Read (ft³)	TC	017324
METRIS & 400A	5 Digit Direct Read (ft³)	NTC	017321
METRIS & 400A	5 Digit Direct Read (ft³)	TC	017323
METRIS & 400A	5 Digit Direct Read (m³)	NTC	017325
METRIS & 400A	5 Digit Direct Read (m³)	TC	017326
675A,800A & 1000A	5 Circle Dial 2.5', 10' (ft³)	NTC	050556
675A,800A & 1000A	5 Circle Dial 2.5', 10' (ft³)	TC	050557
675A,800A & 1000A	5 Digit Direct Read (ft³)	NTC	80002701
675A,800A & 1000A	5 Digit Direct Read (ft³)	TC	80002702
675A,800A & 1000A	6 Digit Direct Read (m³)	NTC	80002703
675A,800A & 1000A	6 Digit Direct Read (m³)	TC	80002704
675A,800A & 1000A	7 Digit Direct Read (m3)	NTC	80002713
675A,800A & 1000A	7 Digit Direct Read (m3)	TC	80002712
675A,800A & 1000A	14" Compensating 5 Circle Dial	NTC & TC	048208
675A,800A & 1000A	2 PSIG Compensating 5 Circle Dial	NTC & TC	557242
675A,800A & 1000A	5 PSIG Compensating 5 Circle Dial	NTC & TC	557243
675A,800A & 1000A	10 PSIG Compensating 5 Circle Dial	NTC & TC	557244
675A,800A & 1000A	15 PSIG Compensating 5 Circle Dial	NTC & TC	557245
675A,800A & 1000A	20 PSIG Compensating 5 Circle Dial	NTC & TC	557336

Parts Catalog

Badges



Meter	Part Description	Type	Part Number
METRIS	5 PSIG MAOP (Standard)	NTC (ft ³)	091055
METRIS	5 PSIG MAOP (Standard)	TC (ft ³)	091056
METRIS	10 PSIG MAOP	NTC (ft ³)	091414
METRIS	10 PSIG MAOP	TC (ft ³)	091415
METRIS	5 PSIG MAOP	TC (m ³)	091130
METRIS	5 PSIG MAOP	NTC (ft ³)	091131
400A	10 PSIG MAOP (Standard)	NTC (ft ³)	037778
400A	10 PSIG MAOP (Standard)	TC (ft ³)	037824
400A	25 PSIG MAOP (HP)	NTC (ft ³)	037776
400A	25 PSIG MAOP (HP)	TC (ft ³)	037825
400A	10 PSIG MAOP	NTC (m ³)	037820
400A	10 PSIG MAOP	TC (m ³)	037826
400A	25 PSIG MAOP m ³ (HP)	NTC (m ³)	037822
675A & 675A ET	675A 25 PSIG MAOP	NTC (ft ³)	037196
675A & 675A ET	675A 25 PSIG MAOP	TC (ft ³)	037197
675A & 675A ET	675A 25 PSIG MAOP	NTC (m ³)	037198
675A & 675A ET	675A 25 PSIG MAOP	TC (m ³)	037199
800A & 800A ET	800A 25 PSIG MAOP	NTC (ft ³)	047196
800A & 800A ET	800A 25 PSIG MAOP	TC (ft ³)	047197
800A & 800A ET	800A 25 PSIG MAOP	NTC (m ³)	047198
800A & 800A ET	800A 25 PSIG MAOP	TC (m ³)	047199
1000A & 1000A ET	1000A 25 PSIG MAOP	NTC (ft ³)	057196

(Badges cont.)

Meter	Part Description	Type	Part Number
1000A & 1000A ET	1000A 25 PSIG MAOP	TC (ft ³)	057197
1000A & 1000A ET	1000A 25 PSIG MAOP	NTC (m ³)	057198
1000A & 1000A ET	1000A 25 PSIG MAOP	TC (m ³)	057199
METRIS, 400A, 675A, 800A & 1000A	Blank Aluminum Badge		017034

Drive Dog



Meter	Part Description	Part Number
METRIS, 400A	Male	010530
675A, 800A & 1000A	Male	550555

Valve Covers



Meter	Part Description	Part Number
METRIS	Valve Cover METRIS, Rear (Lapped)	091040
METRIS	Valve Cover METRIS, Front (Lapped)	091041
400A	Valve Cover 400A (Lapped) <i>Also Order: Valve Cover Bearing p/n 010372</i>	037345
675A & 800A	Valve Cover 675A & 800A (Lapped)	557331
1000A	Valve Cover 1000A (Lapped)	550333

Parts Catalog

Valve Seat



Meter	Part Description	Part Number
400A	Valve Seat	036045
675A & 800A	Valve Seat (with Bearing)	556031
1000A	Valve Seat (with Bearing)	556032

Ceiling Plate



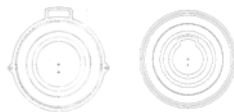
Meter	Part Description	Part Number
400A	Ceiling Plate	030026
675A, 800A & 1000A	Ceiling Plate	550423

Extension Plate



Meter	Part Description	Part Number
675A, 800A & 1000A	Extension Plate	550561

Diaphragm Assembly



Meter	Part Description	Part Number
400A	Diaphragm Assembly <i>Also order: Hex Nut p/n 010820 (2)</i>	060238
675A, 800A & 1000A	Diaphragm Assembly <i>Also order: Hex Nut p/n 110180 (2)</i>	550230

Tangent Adjustment Assembly



Meter	Part Description	Type	Units	Part Number
METRIS	Tangent Adjustment Assembly	NTC	ft ³	091274
METRIS	Tangent Adjustment Assembly	TC	ft ³	091275
METRIS	Tangent Adjustment Assembly - Reverse Stop	NTC	m ³	091276
METRIS	Tangent Adjustment Assembly	NTC	m ³	091281
METRIS	Tangent Adjustment Assembly	TC	m ³	091282
400A	Adjustment Assembly	NTC	ft ³ & m ³	090250
675A, 800A & 1000A	Adjustment Assembly	NTC	ft ³ & m ³	045969
400A	Adjustment Assembly	TC	ft ³ & m ³	090252
675A, 800A & 1000A	Adjustment Assembly	TC	ft ³ & m ³	047978

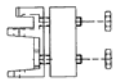
Center Bracket Assembly



Meter	Part Description	Part Number
400A	Center Bracket <i>Also Order: Center Bracket Bearing Boot Seal</i>	010065 010389 060490
675A, 800A & 1000A	Center Bracket Assembly	550938

Main Shaft Assembly

Meter	Part Description	Part Number
400A	Main Shaft <i>Also Order:</i> <i>Thrust Bearing</i>	030095 060087
675A, 800A & 1000A	Main Shaft Assembly (NTC)	550959
675A, 800A & 1000A	Main Shaft Assembly (TC)	550958



Diaphragm Bracket

Meter	Part Description	Part Number
400A	Diaphragm Bracket <i>Also order: E-Clip p/n 010172</i>	015202
675A, 800A & 1000A	Diaphragm Bracket <i>Also order: E-Clip p/n 010175</i>	045194



Carrier Wire Assembly

Meter	Part Description	Part Number
400A	Carrier Wire Bracket Assembly <i>Also order: Wire Screw p/n 010168</i>	070176
675A, 800A & 1000A	Carrier Wire Bracket Assembly <i>Also order: Wire Screw p/n 010040 (2)</i>	550142

Tangent Crank



Meter	Part Description	Part Number
675A & 800A	Tangent Crank	550904
1000A	Tangent Crank	550902

Seal Cup



Meter	Part Description	Location	Part Number
METRIS, 400A, 675A, 800A & 1000A	Seal Cup	Handhole Cover and Index	091061
METRIS	Security Seal Cup	Case	017155
675A, 800A & 1000A	Security Seal Cup	Case	017151

Parts Catalog



Handhole Cover
Screws



Case Screws



Index Box Screw



Index Mounting
Screw

Screws

Meter	Part Description	Location	Quantity	Part Number
METRIS, 400A, 675A, 800A & 1000A	10-24X1/2 Slotted Pan Head	Handhole Cover	2	091096
METRIS, 400A, 675A, 800A & 1000A	Rivet 1/8 x 0.254	Badge	2	091444
METRIS	1/4-20X3/4 Hex Head	Case	10	755304
METRIS, 400A	10-24X5/8 Fil Head Screw SlotD	Index Box	3	010625
METRIS, 400A	10-24X3/8 Fil Head Index Mounting Screw	Index	2	010040
400A	Valve Seat Screw	Top Case	2	010040
400A	1/4-20X3/4 Hex Head	Top Case	8	755304
400A	1/4-20X5/8 Wash Face	Side Cover	22	065270
675A, 800A & 1000A	1/4-20x5/8 Soc Head Cap Screw	Valve Seat Screw	4	091103
675A, 800A & 1000A	5/16-18X3/4 Hex Head	Top Case	18	040320
675A, 800A & 1000A	5/16-18x1 RD Head Screw	Side Cover	30	550321
675A, 800A & 1000A	10-24x7/16 Wash Head SLF TP	IDM Screw	2	015332
675A, 800A & 1000A	1/4-20X1/2 Hex Head Slotted	Index Box Screw	4	010320
675A, 800A & 1000A	10-24X3/8 Fill Head	Index Mounting Bracket	2	010040
675A, 800A & 1000A	6-32X1 TRI RNDLR Taptite	Index Mounting Screw for Indexes #80002701 - #80002704	2	090071
675A, 800A & 1000A	1/4-20X1/2 Hex Head Slotted	Index Bracket Screw for Standard and ET Top	2	010320
675A, 800A & 1000A	1/4-20X.375 FIL Head	Index Bracket Screw for Itron Adapter Plate	2	550622

Parts Catalog

Security Seal Cap



Meter	Part Description	Location	Part Number
METRIS, 400A, 675A, 800A & 1000A	Security Seal Cap	Handhole Cover and Index	017167
METRIS	Security Seal Cap	Case	017156
675A, 800A & 1000A	Security Seal Cap	Case	017152



Center Modules

Meter	Part Description	Part Number
METRIS	Module NTC ft ³	091201NEW
METRIS	Module TC ft ³	091203NEW
METRIS	Module NTC m ³	091205NEW
METRIS	Module NTC m ³ - Reverse Stop	091206NEW
METRIS	Module TC Module m ³	091207NEW

Flag Arm Link



Meter	Part Description	Part Number
METRIS	Flag Arm Link	091025

Valve Cover Guides



Meter	Part Description	Part Number
METRIS	Valve Cover Guides	091044

Gear Shaft, Helical Worm



Meter	Part Description	Part Number
METRIS	Gear Shaft, Helical Worm	091045
METRIS	Gear Shaft, Helical Worm Metric	091135

Retaining Clip



Meter	Part Description	Part Number
METRIS	Retaining Clip	091053

Outlet Seal



Meter	Part Description	Part Number
METRIS	Outlet Seal	091054